

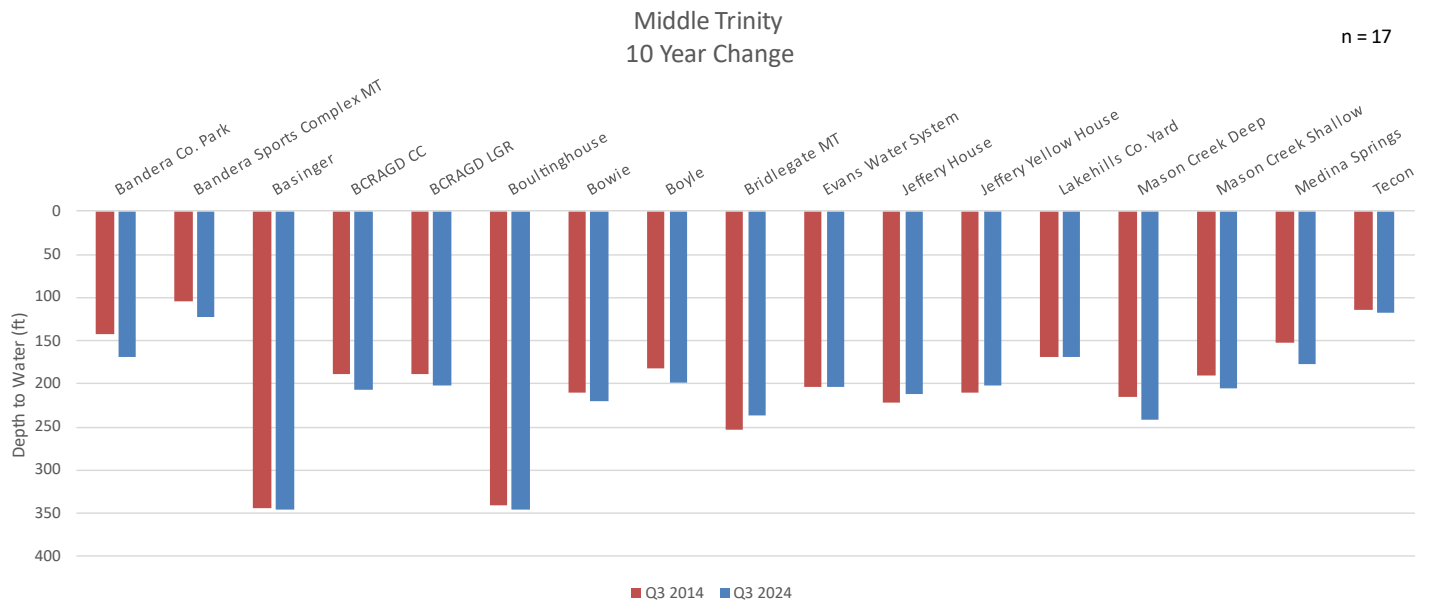
Monitor Well Report- 3rd Quarter FY 2024  
Bandera County Groundwater Evaluation

**Middle Trinity Aquifer**

<b>≈ 3 Month Change (Q2 2024 – Q3 2024)</b>
Average = + 0.30 ft.

<b>1-Year Change (Q3 2023 – Q3 2024)</b>
Average = - 9.49 ft.

<b>10-Year Change (Q3 2014 – Q3 2024)</b>
Average = - 7.59 ft.



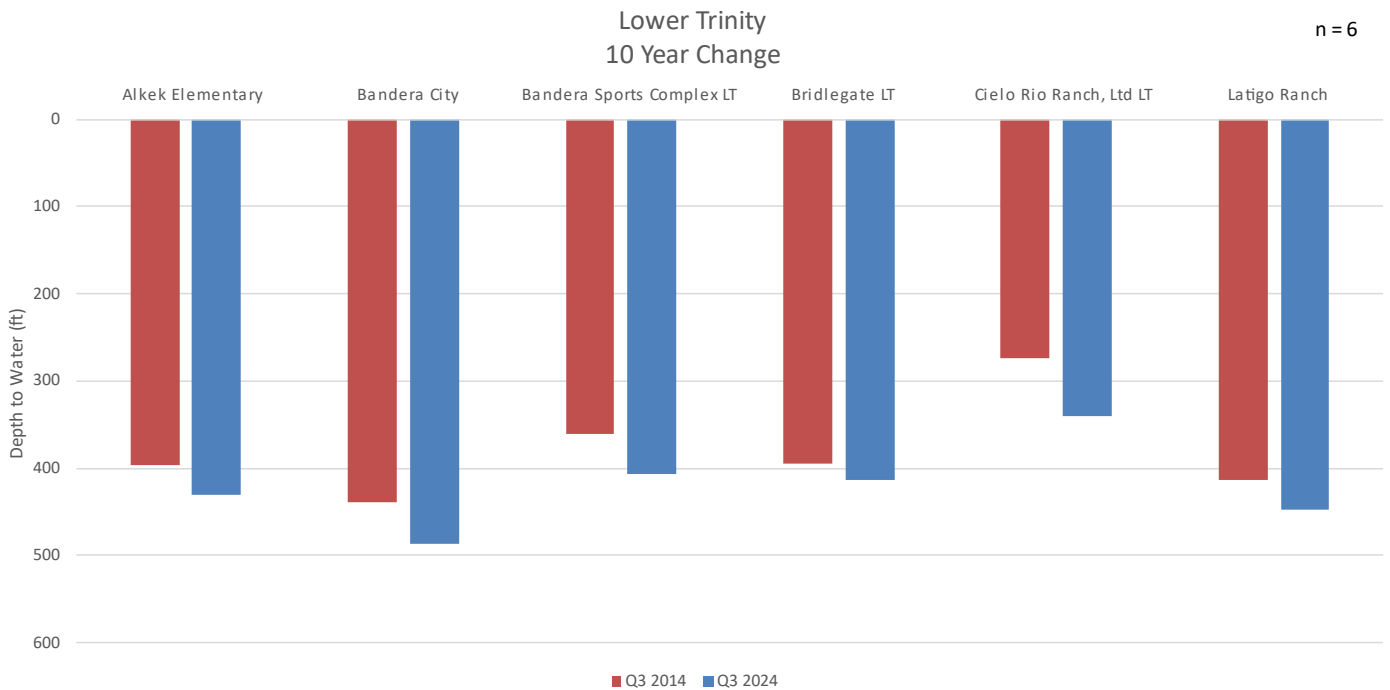


**Lower Trinity Aquifer**

<b>≈ 3 Month Change (Q2 2024 – Q3 2024)</b>
Average = + 0.44 ft.

<b>1-Year Change (Q3 2023 – Q3 2024)</b>
Average = -9.27 ft.

<b>10-Year Change (Q3 2014 – Q3 2024)</b>
Average = - 41.35 ft.





**Edwards Group of the Edwards - Trinity (Plateau) Aquifers**

**≈ 3 Month Change (Q2 2024 – Q3 2024)**

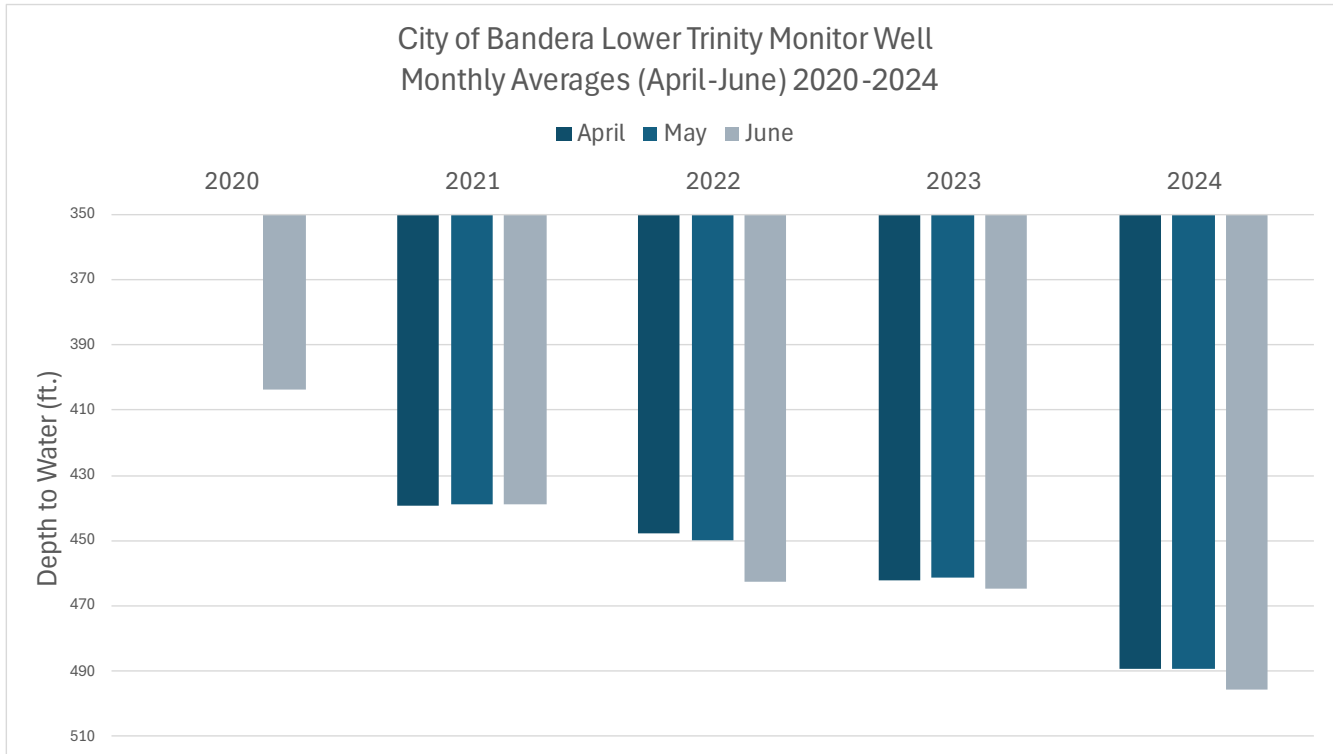
Average = - 0.10 ft.

**1-Year Change (Q3 2023 – Q3 2024)**

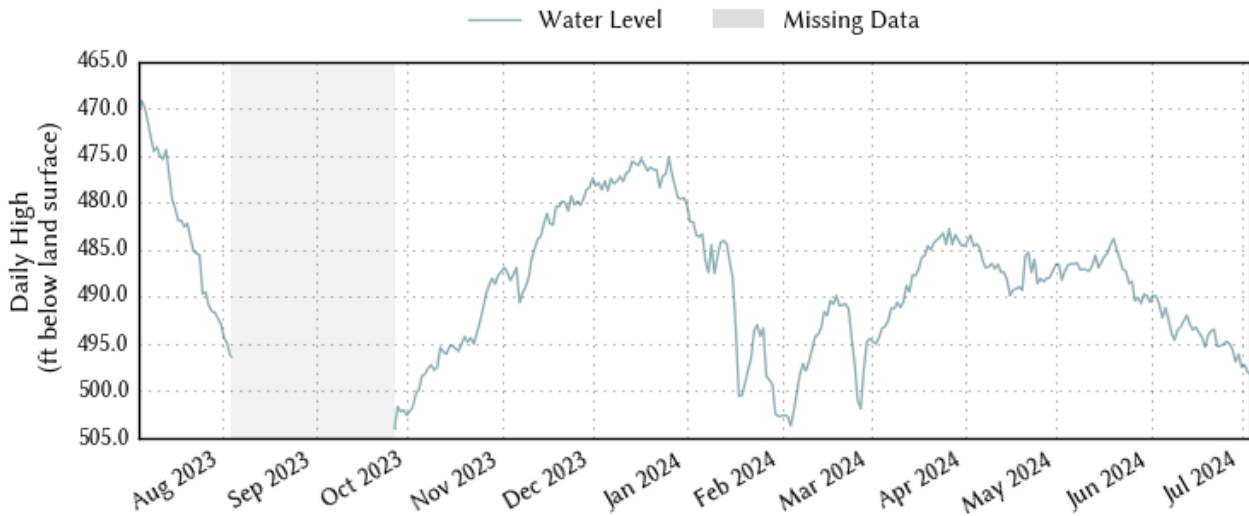
Average = - 0.10 ft

**10-Year Change (Q3 2014 – Q3 2024)**

Average = - 0.12 ft



**City of Bandera Lower Trinity Monitor Well  
Past 1 Year (2023-2024)**



## Bandera County River Authority and Groundwater District



Middle Trinity					~3-Month Change	1-Year Change	10-Year Change	
Location	Q3 2024	Q2 2024	Q3 2023	Q3 2014	Δ	Δ	Δ	
Baby Elephant Enterprises LLC	380.55	367.85	359.95	-	-12.70	-20.60	-	
Bandera Co. Park	168.87	162.37	-	142.97	-6.50	-	-25.90	
Bandera Sports Complex MT	121.85	137.45	116.17	104.78	15.60	-5.68	-17.07	
Barry Lanford	387.08	382.48	381.58	-	-4.60	-5.50	-	
Basinger	346.22	354.92	345.62	343.92	8.70	-0.60	-2.30	
BCRAGD CC	207.24	205.24	200.44	188.78	-2.00	-6.80	-18.46	
BCRAGD LGR	202.04	199.94	197.19	188.44	-2.10	-4.85	-13.60	
Boultinghouse	345.70	347.30	330.5	340.83	1.60	-15.20	-4.87	
Bowie	219.82	219.42	222.82	209.66	-0.40	3.00	-10.16	
Boyle	198.00	193.00	188.2	181.43	-5.00	-9.80	-16.57	
Bridlegate MT	237.20	237.40	242.4	253.10	0.20	5.20	15.90	
Cielo Rio Ranch, Ltd MT	217.52	213.62	213.52	203.12	-3.90	-4.00	-14.40	
Elk Mountain	223.42	223.02	226.02	-	-0.40	2.60	-	
Evans Water System	204.30	203.70	209.1	203.65	-0.60	4.80	-0.65	
Hondo Canyon	152.74†	††	††	-	-	-	-	
Jeffery House	211.00	207.20	186.5	221.3	-3.80	-24.50	10.30	
Jeffery Yellow House	202.34	199.34	180.14	210.37	-3.00	-22.20	8.03	
Jilson	198.50	217.30	193.7	-	18.80	-4.80	-	
Lakehills Co. Yard	169.15	161.45	-	168.21	-7.70	-	-0.94	
Lantana Land Co. Well B	174.08	172.58	179.5	-	-1.50	5.42	-	
Mason Creek Deep	242.20	245.10	234	215.31	2.90	-8.20	-26.89	
Mason Creek Shallow	205.45	207.40	201	190.40	1.95	-4.45	-15.05	
Medina Springs	177.64	175.04	168.34	151.65	-2.60	-9.30	-25.99	
Ol Larry B	389.34	399.24	330.34	-	9.90	-59.00	-	
Sydney Shores	183.68	173.28	158.9	-	-10.40	-24.78	-	
Tecon	118.24	-	109.14	115.07	-	-9.10	-3.17	
†Quarterly Average ††Data Anomaly					x̄	0.30	-9.49	-7.59

Lower Trinity					~3-Month Change	1-Year Change	10-Year Change
Monitor Well	Q3 2024	Q2 2024	Q3 2023	Q3 2014	Δ	Δ	Δ
Alkek Elementary	430.25	425.65	422.05	397.25	-4.60	-8.20	-33.00
Bandera City	487.51	499.2	461.36	438.4	11.69	-26.15	-49.11
Bandera Sports Complex LT	407.5	416.85	385.5	361.54	9.35	-22.00	-45.96
Bridlegate LT	413.12	406.02	388.52	394.07	-7.10	-24.60	-19.05
Cielo Rio Ranch, Ltd LT	340.47	328.97	370.13	274.17	-11.50	29.66	-66.30
Latigo Ranch	447.84	452.64	443.54	413.15	4.80	-4.30	-34.69
x̄					0.44	-9.27	-41.35

Edwards-Trinity					~3-Month Change	1-Year Change	10-Year Change
Location	Q3 2024	Q2 2024	Q3 2023	Q3 2014	Δ	Δ	Δ
Edwards Monitor Well #1	251.40	251.3	251.3	251.52	-0.10	-0.10	0.12