



440 FM 3240
Bandera, Texas 78003
(830) 796-7260
Fax (830) 816-2607
www.bcragd.org

FILED
AT 1:54 O'CLOCK P.M. ON
AUG 15 2024
TANDIE MANSFIELD, COUNTY CLERK
BANDERA COUNTY, TEXAS
BY *[Signature]* DEPUTY

NOTICE TO ALL RESIDENTS OF BANDERA COUNTY- EXTREME DROUGHT RESTRICTIONS IN EFFECT

The Bandera County River Authority And Groundwater District have moved to Extreme Drought Restrictions. The District uses the U.S. Drought Monitor as one component to gauge the drought; it also considers flow conditions in its river basins, local aquifer conditions, and long-term atmospheric data (such as annual precipitation and temperatures).

Below is a comprehensive breakdown of the current drought restrictions for well owners in effect as of August 15, 2024:

The following drought restrictions and any subsequent enforcement actions not only apply to all permit holders and public water suppliers but to anyone who utilizes water from a public water supply system or any District permit holder in the County.

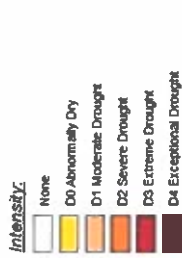
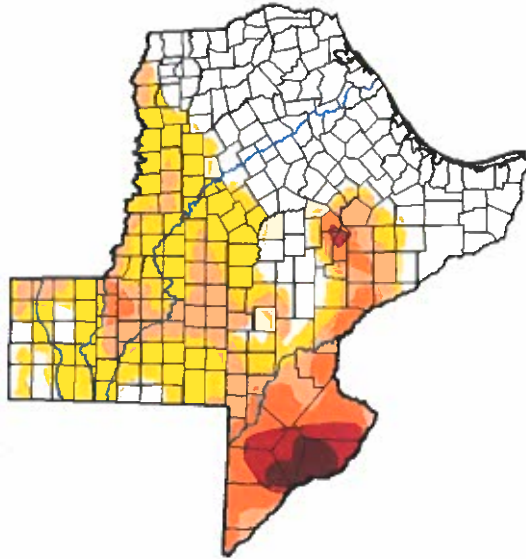
- A. Water permit users shall limit irrigation, including the irrigation of landscaped areas and turf to one day a week during the designated watering hours before 8:00 AM and after 8:00 PM. However, golf courses that use treated wastewater effluent or other non-groundwater sources are allowed to utilize those sources for the watering of golf course greens, tees, and fairways.
- B. The following use of water defined as non-essential shall be prohibited:
 1. Washing down any sidewalks, walkways, driveways, parking lots, tennis courts, or other hard-surfaced areas.
 2. Washing down buildings or structures for purposes other than immediate fire protection.
 3. Failure to repair a controllable leak(s) within a reasonable period after having been given notice directing the repair of such a leak(s).
 4. Washing any motor vehicle, motorbike, boat, trailer, or other vehicles not occurring on the premises of a commercial car wash or service station and not in the immediate interest of public health, safety, and welfare should be prohibited.
 5. All Permittees with wells permitted to pump into surface impoundments shall discontinue pumping. This does not apply to those wells permitted for non-domestic irrigation.
 6. The filling or adding to swimming pools is prohibited.
 7. Leakproof troughs shall be used to supply water to livestock.
- C. The issuance of new water well permits and amendments may be suspended except to replace an existing well.



440 FM 3240
Bandera, Texas 78003
(830) 796-7260
Fax (830) 816-2607
www.bcragd.org

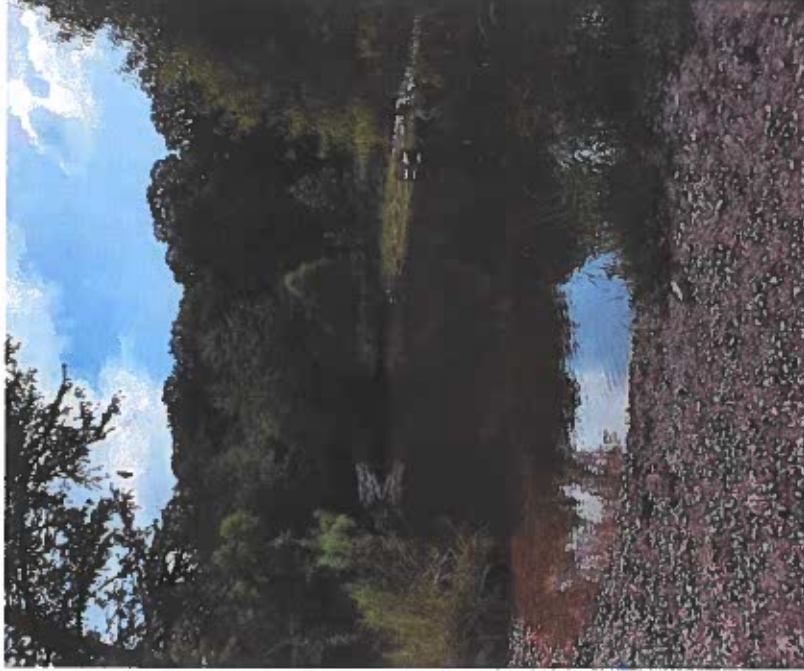
U.S. Drought Monitor Texas

August 13, 2024
(Released Thursday, Aug. 15, 2024)
Valid 8 a.m. EDT



The Drought Monitor focuses on broad-scale conditions. Local conditions may vary. For more information on the Drought Monitor, go to <http://droughtmonitor.unl.edu/about.aspx>

Author:
Curtis Rigand
National Drought Mitigation Center
USDA NDS
Drought
droughtmonitor.unl.edu



For more information, please visit the District's website: www.bcragd.org

David Mauk
General Manager, BCRAGD