

BCRAGD

PUBLIC SERVICE ANNOUNCEMENT:

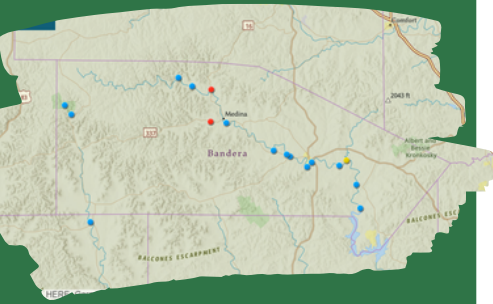
Surface Water Staff from the Bandera County River Authority and Groundwater District collected water samples from sites along the Medina River, Medina Lake, Sabinal River, and their tributaries to assess levels of E. coli bacteria on March 26th & 27th, 2024.

E. coli is a bacteria found in the gut of warm-blooded animals and is known to potentially cause illness in humans if ingested. No primary contact recreation should take place if the number of E. coli exceeds 399 most probable number (MPN) per 100 mL of water. This standard is set by the Texas Commission on Environmental Quality (TCEQ) in the Texas Administrative Code (30 TAC §307.7). This means that no one should participate in activities that could result in the total submersion of the head underwater if counts exceed the 399 MPN standard.

There is ALWAYS a possibility of infection from E. coli or other waterborne illnesses. Never drink or ingest river water without proper disinfection; always swim at your own risk.

MEDINA RIVER E. COLI COUNTS MARCH 26TH & 27TH

*Indicates a duplicate sample



Interactive Map of locations sampled, current E.coli count, temperature, water level, and current photo located at <https://www.bcragd.org/water-quality-testing/>



Medina Lake County Park @ PR 37	Unable to access	Bandera City Park @ SH173	1,300 MPN*	W. Prong @ Coalkin Rd	240 MPN
Medina Lake @ Haby's Cove	Unable to access	Bandera City Park @ 1st St	228 MPN	W. Prong @ Carpenter Ck	8 MPN
Medina Lake @ Red Cove Marina	Unable to access	Tarpley Crossing	64 MPN	West Verde Ck @ Hill Country SNA	6 MPN
Medina Lake @ Pop's Place	11 MPN	Ranger Crossing	80 MPN	Williams Ck in Tarpley	14 MPN
English Crossing	308 MPN	Can Ck @ Lost Maples SNA	1 MPN	Seco Ck @ RR470	5 MPN
Bandera River Ranch	Dry	Moffett Park in Medina	50 MPN	Utopia City Park	19 MPN
Upstream of WWTP, Bandera	142 MPN	1st Crossing @ RR337	59 MPN	Sabinal R @ SH187	1 MPN
Bridlegate Park	44 MPN	N. Prong @ Wallace Ck	16 MPN	Sabinal R @ Cornelius Rd	150 MPN
Bandera Creek @ SH 16 S	86 MPN	N. Prong @ Rocky Ck	6 MPN	Sabinal RV @ Lost Maples SNA	35 MPN
Lower Mason Creek @ Chipman	28 MPN	N. Prong @ Brewington	10 MPN	Medina River @ Peaceful Valley Rd	27 MPN

*Indicates the sample was above TCEQ threshold of 399 MPN