



Bandera County River Authority and Groundwater District

Monitor Well Report- 4th Quarter FY 2023
Bandera County Groundwater Evaluation

Middle Trinity Aquifer

~3 Month Change (Q3 2023 – Q4 2023)

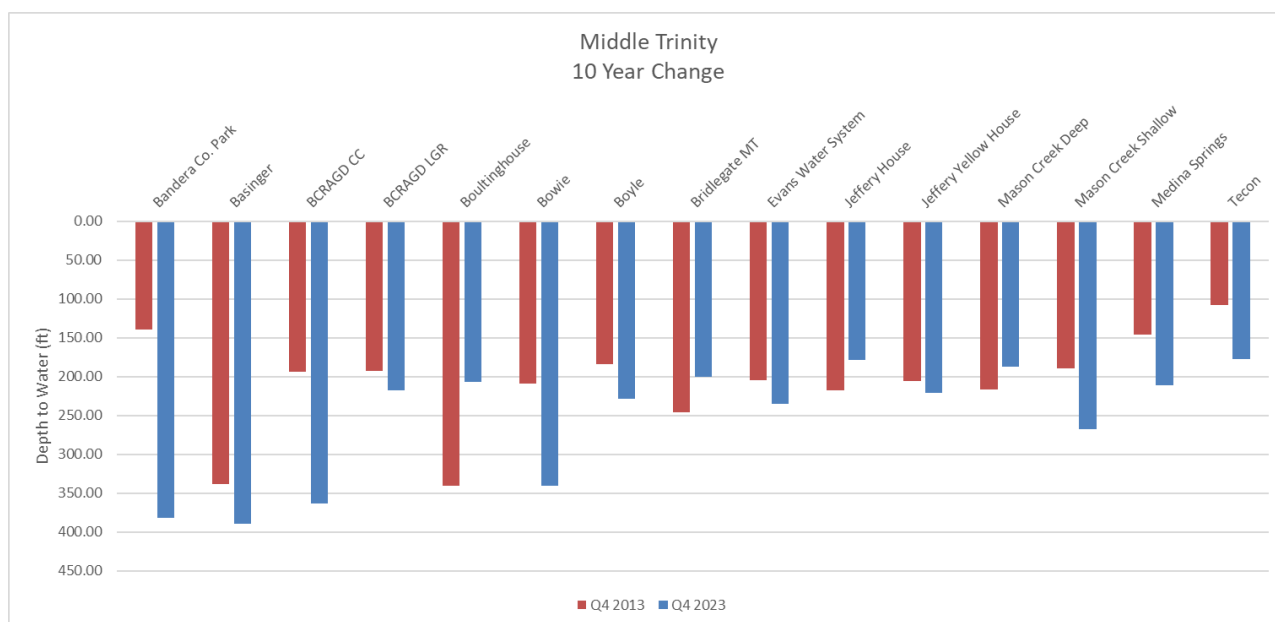
Average = - 15.20 ft.

1-Year Change (Q4 2022 – Q4 2023)

Average = + 0.43 ft.

10-Year Change (Q4 2013 – Q4 2023)

Average = - 17.65 ft.





Bandera County River Authority and Groundwater District

Lower Trinity Aquifer

~3 Month Change (Q3 2023 – Q4 2023)

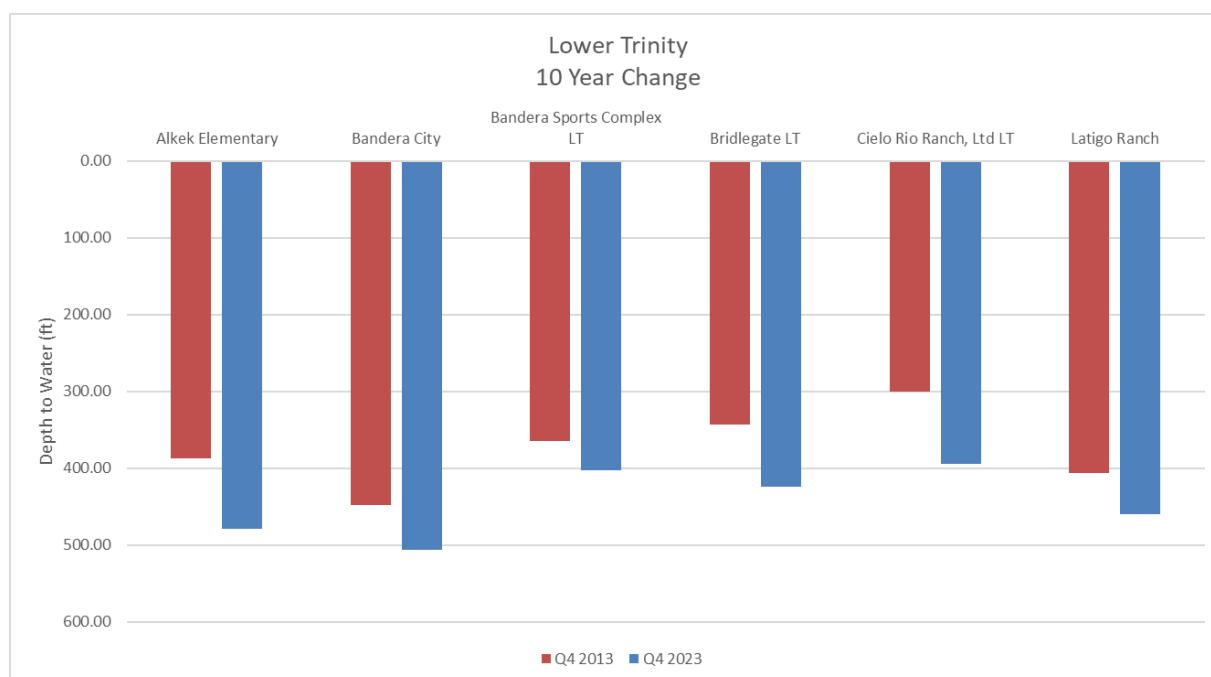
Average = - 28.93 ft.

1-Year Change (Q4 2022 – Q4 2023)

Average = -26.02 ft.

10-Year Change (Q4 2013 – Q4 2023)

Average = - 69.45 ft.





Edwards Group of the Edwards - Trinity (Plateau) Aquifers

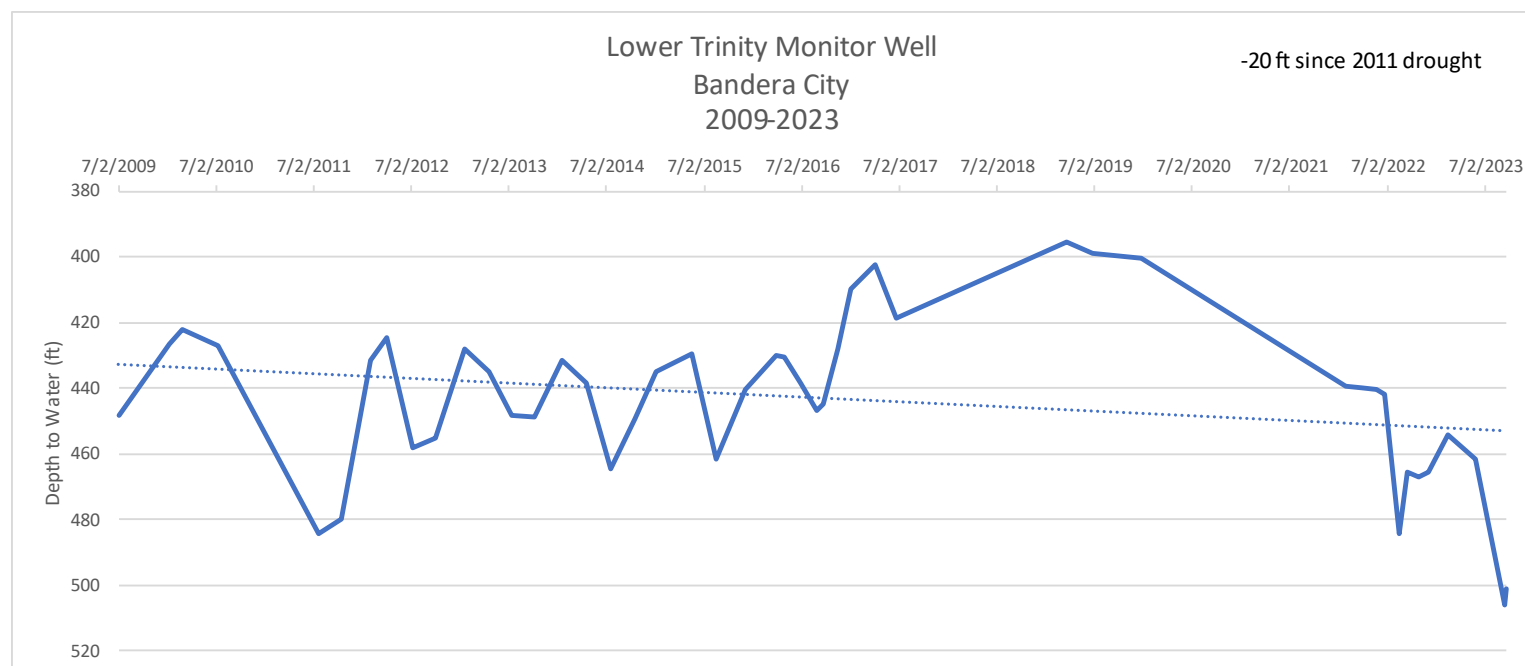
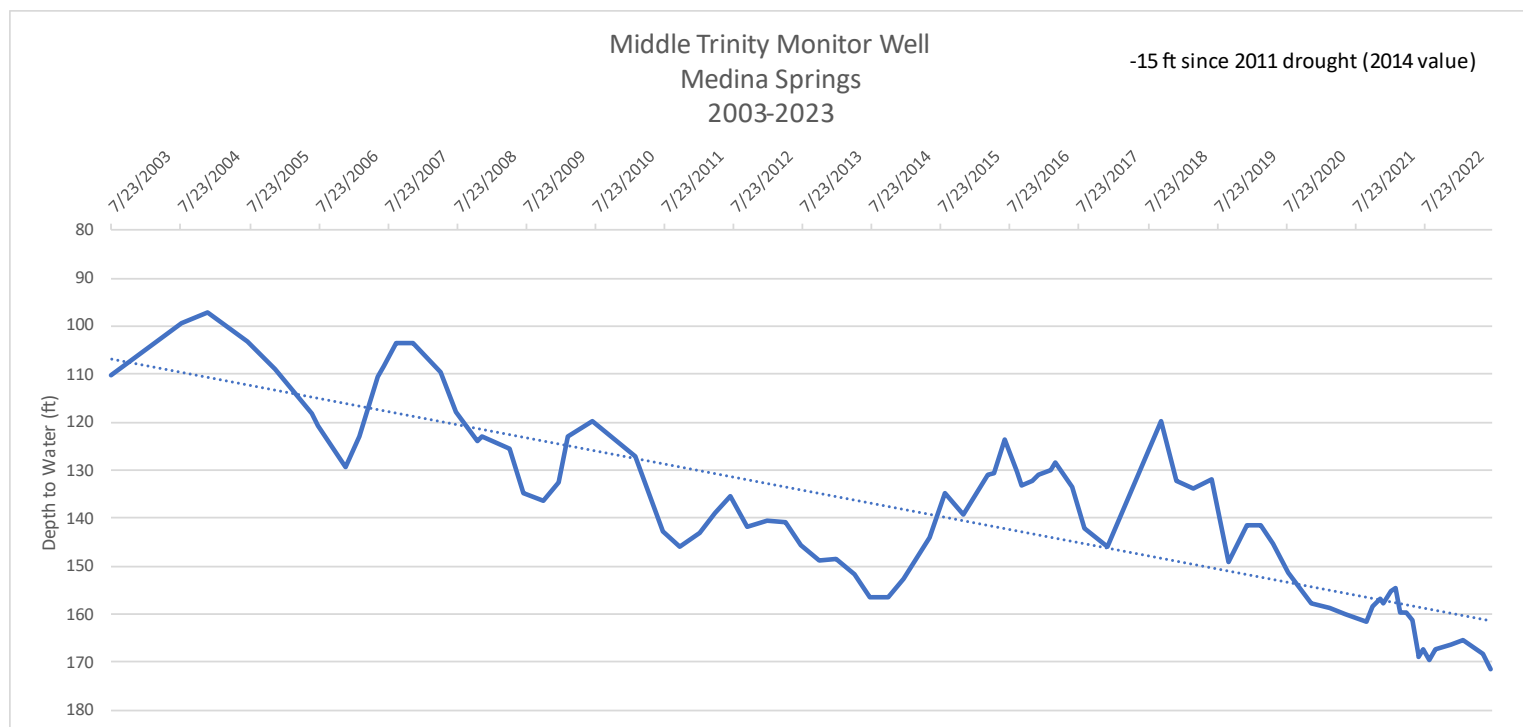
~3 Month Change (Q3 2023 – Q4 2023)
Average = - 0.13 ft.

1-Year Change (Q4 2022 – Q4 2023)
Average = - 0.53 ft

10-Year Change (Q4 2013 – Q4 2023)
Average = - 0.16 ft



Bandera County River Authority and Groundwater District





Bandera County River Authority and Groundwater District

Middle Trinity					~3-Month Change	1-Year Change	10-Year Change
Location	Q4 2023	Q3 2023	Q4 2022	Q4 2013	Δ	Δ	Δ
Baby Elephant Enterprises LLC	381.35	359.95	384.85	N/A	-21.40	3.50	
Bandera Co. Park	N/A	N/A	N/A	139.24			
Bandera Sports Complex MT	164.05	116.17	141.35	108.11	-47.88	-22.70	-55.94
Barry Lanford	388.98	383.58	388.88	N/A	-5.40	-0.10	
Basinger	363.72	345.62	360.92	338.12	-18.10	-2.80	-25.60
BCRAGD CC	218.04	200.44	215.44	193.44	-17.60	-2.60	-24.60
BCRAGD LGR	206.44	197.19	207.09	193.08	-9.25	0.65	-13.36
Boultinghouse	339.90	330.50	387	340.85	-9.40	47.10	0.95
Bowie	228.02	222.82	244.42	208.86	-5.20	16.40	-19.16
Boyle	200.20	188.20	200.4	183.78	-12.00	0.20	-16.42
Bridlegate MT	239.80	240.50	247.3	245.63	0.70	7.50	5.83
Cielo Rio Ranch, Ltd MT	228.42	213.52	224.72	N/A	-14.90	-3.70	
Elk Mountain	234.72	225.72	231.6	N/A	-9.00	-3.12	
Evans Water System	216.50	209.10	209.5	204.28	-7.40	-7.00	-12.22
Hondo Canyon	178.08	226.02	207.99	N/A	47.94	29.91	
Jeffery House	220.40	186.50	220.8	217.2	-33.90	0.40	-3.20
Jeffery Yellow House	209.34	180.14	211.14	205.94	-29.20	1.80	-3.40
Jilson	214.30	193.70	186.1	N/A	-20.60	-28.20	
Lakehills Co. Yard	166.05	N/A	165.45	156.67		-0.60	-9.38
Lantana Land Co. Well B	187.08	176.58	184.38	N/A	-10.50	-2.70	
Mason Creek Deep	267.30	234.00	253.9	216.81	-33.30	-13.40	-50.49
Mason Creek Shallow	211.20	201.00	208.2	189.31	-10.20	-3.00	-21.89
Medina Springs	171.42	168.34	167.34	145.74	-3.08	-4.08	-25.68
Ol Larry B	376.74	333.54	380.54	N/A	-43.20	3.80	
Sparks	350.40	310.00	N/A	N/A	-40.40		
Sydney Shores	177.88	157.88	167.88	N/A	-20.00	-10.00	
Tecon	115.84	109.14	119.44	108.00	-6.70	3.60	-7.84
x̄					-15.20	0.43	-17.65

Lower Trinity					~3-Month Change	1-Year Change	10-Year Change
Monitor Well	Q4 2023	Q3 2023	Q4 2022	Q4 2013	Δ	Δ	Δ
Alkek Elementary	479.45	422.05	433.85	387.05	-57.40	-45.60	-92.40
Bandera City	505.80	461.36	465.28	448.20	-44.44	-40.52	-57.60
Bandera Sports Complex LT	402.90	385.50	390.50	364.77	-17.40	-12.40	-38.13
Bridlegate LT	423.92	388.52	411.32	343.12	-35.40	-12.60	-80.80
Cielo Rio Ranch, Ltd LT	394.47	370.13	354.67	300.75	-24.34	-39.80	-93.72
Latigo Ranch	460.44	465.84	455.24	406.38	5.40	-5.20	-54.06
x̄					-28.93	-26.02	-69.45

Edwards-Trinity					~3-Month Change	1-Year Change	10-Year Change
Location	Q4 2023	Q3 2023	Q4 2022	Q4 2013	Δ	Δ	Δ
Edwards Monitor Well #1	251.43	251.3	250.9	251.27	-0.13	-0.53	-0.16