

# BCRAGD

## PUBLIC SERVICE ANNOUNCEMENT:

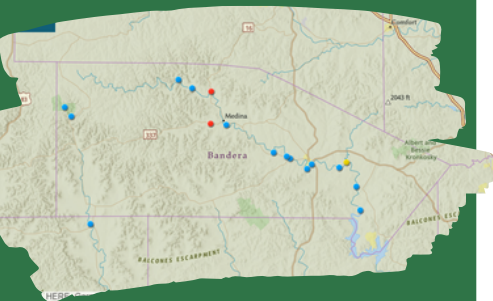
Surface Water Staff from the Bandera County River Authority and Groundwater District (BCRAGD) collected water samples from sites along the Medina River, Medina Lake, Sabinal River, and their tributaries to assess levels of E. coli bacteria on Sep. 12th & 13th, 2023.

E. coli is a bacteria found in the gut of warm-blooded animals and is known to potentially cause illness in humans if ingested. No primary contact recreation should take place if the number of E. coli exceeds 399 most probable number (MPN) per 100 mL of water. This standard is set by the Texas Commission on Environmental Quality (TCEQ) in the Texas Administrative Code (30 TAC §307.7). Meaning no one should participate in activities that could result in the total submersion of the head underwater if counts exceed the 399 MPN standard.

There is ALWAYS a possibility of infection from E. coli or other waterborne illnesses. Never drink or ingest river water without proper disinfection; always swim at your own risk.

## MEDINA RIVER & SABINAL RIVER E. COLI COUNTS SEPTEMBER 12 & 13TH

\*Indicates a duplicate sample



Interactive Map of locations sampled, current E.coli count, temperature, water level, and current photo located at <https://www.bcragd.org/water-quality-testing/>

Medina Lake County Park @ PR 37	Unable to access	Bandera City Park @ SH173	325 MPN	W. Prong @ Coalkiln Rd	613 MPN*
Medina Lake @ Haby's Cove	Unable to access	Bandera City Park @ 1st St	13 MPN	W. Prong @ Carpenter Ck	11 MPN
Medina Lake @ Red Cove Marina	Unable to access	Tarpley Crossing	24 MPN	West Verde Ck @ Hill Country SNA	770 MPN*
Medina Lake @ Pop's Place	Dry	Ranger Crossing	Dry	Williams Ck in Tarpley	11 MPN
English Crossing	56 MPN	Can Ck @ Lost Maples SNA	<1 MPN	Seco Ck @ RR470	19 MPN
Bandera River Ranch	Dry	Moffett Park in Medina	47 MPN	Utopia City Park	1 MPN
Upstream of WWTP, Bandera	219 MPN	1st Crossing @ RR337	194 MPN	Sabinal R @ SH187	Dry
Bridlegate Park	435 MPN*	N. Prong @ Wallace Ck	Dry	Sabinal R @ Cornelius Rd	65 MPN
Bandera Creek @ SH 16 S	Dry	N. Prong @ Rocky Ck	Dry	Sabinal RV @ Lost Maples SNA	25 MPN
Lower Mason Creek @ Chipman	Dry	N. Prong @ Brewington	Dry		

\*Indicates the sample was above TCEQ threshold

