

# BCRAGD

## PUBLIC SERVICE ANNOUNCEMENT:



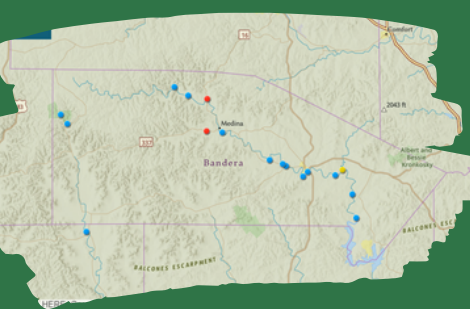
Surface Water Staff from the Bandera County River Authority and Groundwater District (BCRAGD) collected water samples from sites along the Medina River, Medina Lake, Sabinal River, and their tributaries to assess levels of E. coli bacteria on August 29, 2023.

E. coli is a bacteria found in the gut of warm-blooded animals and is known to potentially cause illness in humans if ingested. No primary contact recreation should take place if the number of E. coli exceeds 399 most probable number (MPN) per 100 mL of water. This standard is set by the Texas Commission on Environmental Quality (TCEQ) in the Texas Administrative Code (30 TAC §307.7). Meaning, no one should participate in activities that could result in the total submersion of the head underwater if counts exceed the 399 MPN standard.

There is ALWAYS a possibility of infection from E. coli or other waterborne illness. Never drink or ingest river water without proper disinfection, and always swim at your own risk.

## MEDINA RIVER & SABINAL RIVER E. COLI COUNTS AUGUST 29, 2023

\*Indicates a duplicate sample



Interactive Map of locations sampled, current E.coli count, temperature, water level, and current photo located at <https://www.bcragd.org/water-quality-testing/>



Medina Lake - Park @ PR 37	Unable to access	Bandera City Park @ 1st St	41 MPN	Can Creek @ Lost Maples	Unable to access
English Crossing	42 MPN	Tarpley Crossing	52 MPN	Medina Lake @ Pop's Place	Dry
Bridlegate Park	1,733 MPN*	Ranger Crossing	>2420 MPN*	N. Prong, Wallace Ck	Dry
Bandera River Ranch Park	Dry	Moffett Park in Medina	204 MPN	Medina Lake @ Haby's Cove	Unable to access
W. Prong @ Coalkiln Rd	411 MPN*	N. Prong @ Brewington	2 MPN	Utopia City Park	69 MPN
Medina Lake @ Red Cove	Unable to access	Sabinal R @ Lost Maples	387 MPN	N. Prong @ Rocky Creek	Dry
Bandera City Park @ SH173	436 MPN*	Medina Rv @ Peaceful Valley Rd	461 MPN*		

\*Indicates the sample was over the TCEQ threshold of 399 MPN.

There is ALWAYS a possibility of infection from E. coli or other waterborne illnesses. **Never drink or ingest river water without proper disinfection, and always swim at your own risk.**

